

LIW-910HQ/IR

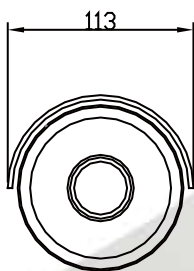
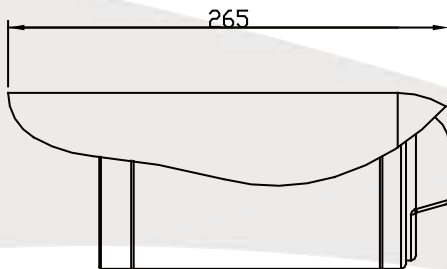


Features

- H.264, MPEG4 and Motion JPEG simultaneously (Tri-encoders)
- Comprehensive I/O ports: Audio in/ out; DI/DO, RS485, RJ45, BNC video output, Reset button
- Support various protocols: RTSP, UPnP, 3GPP, Multi-cast, Uni-cast, Email, Ftp
- Power over Ethernet built in
- IP68 Vandal Water proof



Dimensions



Model No.	LIW-910HQ/IR
Network	
Ethernet	10/100M auto negotiation
Streaming	Simultaneously multi-streaming
	Streaming over UDP, TCP, or HTTP
	M-JPEG streaming over HTTP
Supported Protocols	Constant and variable bit rate (MPEG4/H.264) TCP, UDP, HTTP, SMTP, FTP, NTP, DNS, DDNS, DHCP, ARP, Bonjour, UPnP, RTSP, RTP, RTCP, PPPoE, 3GPP, ICMP (HTTPS, Samba, SIP coming soon)
UPnP Level	UPnP Discover & Auto port forwarding
Video/Audio	
Image Sensor	1/3" SONY Super HAD CCD
Camera DSP	Sony HQ1
Sensor Resolution	540TVL
Lens Type	4.0mm/6.0mm/8.0mm/12mm/16mm CS lens
IR LED	5 φ High-light IR LED x 14 pcs / 8 φ High-light IR LED x 42 pcs
IR Distance	60 meter
Video Compression	9 profiles simultaneously (CCD sensor) 1) H.264: 4CIF/CIF/QCIF 2) MPEG4: 4CIF/CIF/QCIF 3) M-JPEG: 4CIF/CIF/QCIF (for Megapixel sensor input, 2 more MEGA video profiles)
Image Frame Rate	Max. 30 fps (N), 25 fps (P) for all resolutions
Image Setting	De-interlace (4CIF resolution)
	De-noise
	Text, time and date overlay
2-way Audio	Simplex/Duplex 2-way audio
3GPP Cell Phone	3GPP mobile surveillance. Auto+video
I/O port	
DI/DO Ports	DI: 1/DO: 1
RS-485	RS485 for PT scanner
Audio in/out	Line in/Line out
Video Output	1 75ohm composite video output (BNC connector)
Reset Button	Yes
Motion Detection	10 zones
Alarm Events	1) File upload via FTP or email; Upload video clip or snapshot
	2) Notification via email, HTTP, and TCP
	3) External output activation
	4) Audio alerting
Video Buffer	Pre-and post-alarm recording buffering
System	
OS	Windows® 2000, XP, Vista
Browser	IE 6.0 or later / Firefox 2.0 or later
Users	20 simultaneous uni-cast users
	Unlimited users using multicast
Security	Password protection, IP address filtering
Power Supply	AC 90V~AC 240V
Power Consumption	7 Watts below
Power over Ethernet	IEEE802.3af
Construction	IP68 weather proof
Dimension (ØxH)mm	Ø113xH:265
Weight	1350g